

Today's Take-Aways

Regional Updates

- Regional public communications will soon be rolling out with regards to a mandatory vaccination policy for visitors and essential caregivers / care partners at hospitals in the Champlain region. The new policy is set to take effect within the next week or two. More information with regards to the policy and its implementation will be shared in the coming days with staff and our screeners in order to assist with this transition.

COVID-19 Vaccine Rollout

- The Ministry of Health is in the process of connecting with health units in order to review potential plans for the possible rollout of the vaccine to those in the 5-11 year old age group and to the potentially expanded group of individuals requiring a third dose. We are maintaining a close connection with the health unit and will be providing assistance as required.

Infection Prevention and Control / Occupational Health and Safety

- As we move towards implementation of the mandatory vaccination policy at PRH, we are very pleased to report that Pembroke Regional Hospital has phenomenal vaccination rates for both staff and physicians. To date, 92% of our staff have reported that they are either fully vaccinated or in the process of receiving their second dose. Meanwhile, our professional staff vaccination rate sits at 97%. Thanks to all who have assisted in this process.

- The “COVID-19 Vaccination: making an informed decision” eLearning module is now available via the eLearning system. Anyone who is interested is able to self enroll and complete the training. Any staff who opted to do the “education and testing” option will be required to do this training and will receive an email through their PRH account with details regarding self enrollment and deadline for completion.

- The hospital's new Vaccination Policy has now been uploaded to the Intranet for anyone to access. Simple click on “Policy and Procedure Manual” on the Intranet's home page and then under the search bar type “COVID-19 Vaccination Policy”.

- Significant changes have recently been made to the staff screening questions. Be sure to pay close attention to the revisions to ensure you are answering them correctly.

- Please note that, now that staff and physicians are completing screening electronically, the active screening times for the Tower B entrance have been adjusted. Active screening now runs from 7:30 a.m. to 5 p.m.



Pembroke Regional Hospital Intranet
Infection Control Alerts and Advisories
Electronic Medical Record (EMR) Help

Take the Survey!
COVID-19 Vaccination Survey

COVID-19
[Mask](#)
[PRH Video Messages On-Take](#)
[Order Videos and Webinars](#)
[PRH Videos: Reinforcement Series](#)

Phone Page: Contact Us
[Searchable PRH Phone Directory](#)
[Print List](#)
[Phone Number Book List](#)
[Check and Check Director](#)

Forms
[PRH Forms](#)
[The Sick Order Form](#)

Policy and Procedure Manual
[Policy and Procedure Manual](#)
[Clinical Staff Manual](#)
[Regional Order Index](#)
[LV Manual](#)
[LV Order Index](#)
[Emergency Search \(LV only\)](#)
[LV Consults/Transfers](#)
[SHEQ Overview](#)
[COVID-19 Overview: Pembroke](#)
[COVID-19 Overview: Parnessville \(page 4/5\)](#)
[PRH Protocols of Infection and other control issues](#)
[PRH Associated Sites/Units](#)
[PRH Ambulance 2020](#)
[Guidelines for Isolation, Antibiotic Therapy](#)

Today's Take-Aways Continued

- In order to assist with the auditing process for electronic screening for staff and physicians, everyone who is working, whether that work is being done onsite or not, should be completing daily screening.

- We are still in the midst of developing a process to ensure that we have doses of the COVID-19 vaccine onsite so that our patients who wish to be vaccinated can be upon request.

Emergency Preparedness

- Staff can anticipate being asked to complete a survey in the next week or two with regards to emergency call in details. This will include updating contact information and response times to present at PRH in an emergency situation.

- Staff are reminded that REMAR tags (the red and white tags on the exterior of each door) are only to be used during Code Green or when an evacuation is taking place. In the coming weeks, more details and education on the use of REMAR tags will be rolled out.



Departmental Updates:

Rehabilitation

- Please note that due to the fact that the evenings are getting darker earlier, the Rehab Deck will now be open from 8 a.m. to 7:30 p.m. As the evenings get shorter the lock down times for the deck will be adjusted accordingly.

Allied Health Team Celebrates #RehabilitationDay

September 15th has been recognized as *Rehabilitation Day* by the Rehabilitative Care Alliance and hospitals within the Champlain Region.

Every day our patients inspire us by teaching us resilience and strength on their journey to recovery. Their achievements big and small are why our interdisciplinary team of healthcare professionals, working in both the inpatient and outpatient programs, keep doing what they do.

Thank you to all members of the PRH Allied Health team who help our patients achieve rehabilitation goals everyday, every step of the way.





September 2021

Did you know?

BEDBOARD is the hub of our electronic medical record – electronic documentation for inpatients will be implemented from the **BEDBOARD**

All clinical staff have access to the **BEDBOARD** using their P account

****If you do not please ask your Manager to email HELPDESK to add this access to your account**

Current Functions available - **BEDBOARD**

- Transfer patients
- Discharge patients
- View safety alerts (IPAC and violence)
- Access lab, DI reports and dictations
- Evacuation lists
- Discharge priority indicator
- Nurse assignments (medical floors)
- Add/Edit/View diets
- View allergies
- Add brief notes
- View patient care team color

What's Coming

BEDBOARD NEW functions/features

- Add/edit allergies
- IPAC documentation surveillance including Antibiotic Stewardship Program and progress notes
- Vitals to auto-populate in EMR from point of care
- Lab order entry
- Printing of Baby and Mother Bands
- Colour bands based on registration
- Worklist with the following forms
 - Admission assessment (medical and surgical)
 - Do not Resuscitate (DNR)
 - Fall Risk
 - Braden scale
 - Confusion Assessment Method (CAM)
 - Antibiotic Resistant Organisms (ARO)
 - Acute Respiratory Infection (ARI)
 - Smoking cessation
 - Violence/Aggression Assessment Checklist (VACC)
 - Safety care plan
 - Behavioural care plan

What's New

- Adult armbands with CPI barcodes
- Patient labels in emergency department replacing the blue cards and addressographs
- New scanners in Health records with improved functionality
- IPAC surveillance worklist – displays all newly admitted patients, patients on additional precautions and patients on surveillance for antibiotic stewardship

Behind the scenes

- Working on establishing Role based Access and Security
- Interface engine for improved integration ability
- Working to automate data flow to OHI for smoking cessation program
- Working to improve waitlist data entry
- Working with OR to have electronic requisitions from doctors office using new GE OPERA software

For Questions Contact

The CAPE Project Office in D202.2 extension 8302

GRATITUDE

• Celebrating the **ED team** - "The work you do as a team in the ED day in and day out is important, complex and both physically and emotionally challenging; the pandemic has significantly emphasized that challenge. Your commitment to high quality care and passion for our patients' health is appreciated every day. The compassion, optimism and kindness that you project do not go unnoticed. Thank you for all you do!" *Kaley Lapierre*

• "Celebrating the September 4th crew consisting of the **ED, paramedics and OHI (Ottawa Heart Institute) Fellow** who was absolutely phenomenal. Together, they helped me send a lovely gentleman who walked into triage to the OHI for a STEMI in 45 min. I am thoroughly impressed by the team." *Dr. Emmeline Légaré-Archambault*

• Medical - "I just wanted to say 'Thank you to **Andre Renaud, Greg Tate and Sara McKean-Schulthies** for helping to keep things running smooth!" *Rachel England*

• A big THANK YOU to **Rita Amodeo, Tyler Graveline, Sarah Selle, Roger Martin, and Claire Johnson** who assisted with the pre-order preparations for the Staff Association's Corn Treat Day on Tuesday! Your assistance was much appreciated. *Carolyn Levesque*

• "I want to thank the **Maintenance department (Steven, Mark and Jacob)** for going above and beyond. They moved a donated hospital bed to a patient in need. The patient and family were very appreciative and so was the discharge team. Thanks again for all your help. *Annette Davidson*



Tower A:

• In the 1A North Wing, all the ceiling tiles have been installed, the offices and corridor have been painted and the washrooms are complete. The terrazzo floors are being waxed. However, some offices are still missing baseboards which are back ordered. Two staff have already been relocated into their new offices and the others will be moving in the next few weeks.

• The *Cancer Care Project* for Pharmacy is ongoing. Some walls have been demolished and new walls erected in different locations. Work is being done to remove the heating radiators in the rooms and cap the heating lines. This required asbestos abatement of the insulation on the pipes in the ceilings below on the 4th floor in LDRP.

Tower B:

• The metal roof on the Rehab Dining Room was completed except for the metal flashing around the perimeter.

• Work is continuing on the installation of main sprinkler pipes in the 1st floor link corridor to tie into the risers in Tower A.

Tower C:

• Work continues with the installation of heating control and isolation/balancing valves on the Ground floor area behind the elevator.

Tower D:

• Work on the 4th floor is now complete except for some HVAC air balancing. The Pembroke Family Medicine Teaching Unit has vacated their Tower C location and moved into 4th Floor, Tower D.

LEAN IN

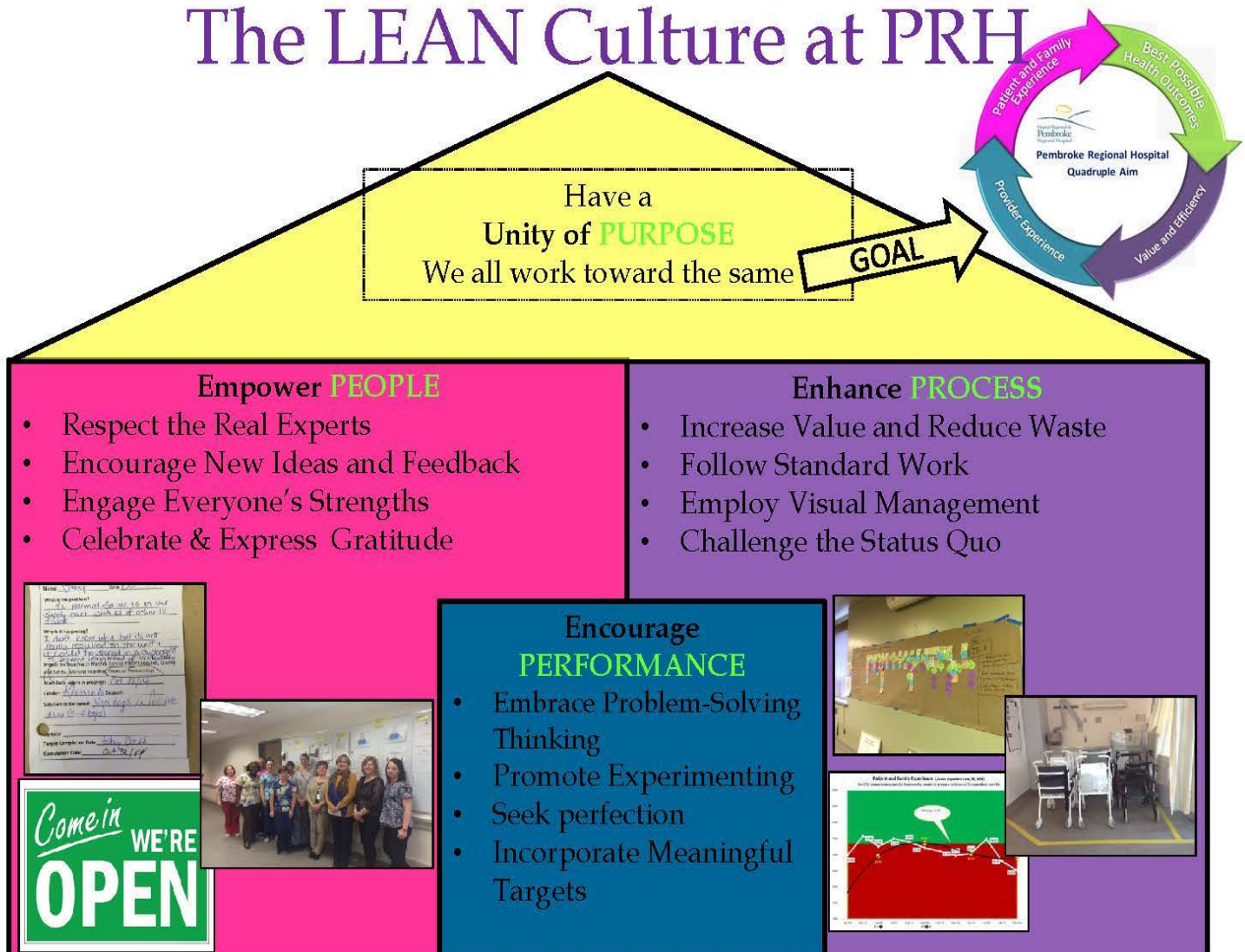
Sure, January 1st may mark the start of a new year, but September 1st feels like a fresh start for many of us!

As we head into fall, this is the time to take charge, get inspired, and tackle all those goals you've been "getting around to." And for some, this may be the perfect time to get back to the LEAN Process routine at PRH!

Over the next several months, we will focus on revitalizing LEAN Process Improvement across the organization. This will begin with a department-based LEAN inventory where we will be working with individuals and groups to re-implement LEAN processes (huddles, Status Updates, Improvement Projects) and offer additional LEAN training.

To start, let's review the goals of Lean thinking here at PRH:

The LEAN Culture at PRH



Guardian Angels

Nancy Schroeder



Pembroke Regional Hospital Foundation  Fondation de l'Hôpital Régional de Pembroke

Congratulations



WEEK #7 WINNER
Rose Lacelle
\$1,343

TICKET #G-3216306
Card #29
Revealed: 7 of Diamonds

www.prhcatchtheace.ca

Congratulations



WEEK #8 WINNER
Janis Bell
\$1,574

TICKET #H-2823852
Card #27
Revealed: 10 of Hearts

www.prhcatchtheace.ca

Next weeks ESTIMATED Jackpot, if the Ace is caught is over: \$18,000!



Current Facts and Figures

- **Renfrew County:** 9 active case, 10 deaths
- **Ottawa:** 433 active cases, 594 deaths
- **Ontario:** 15,761 active cases, 9,632 deaths

Foundation News

Pembroke Regional Hospital Foundation



Fondation de l'Hôpital Régional de Pembroke



Play PRH *Catch the Ace* to win BIG and support the Hospital! Get your tickets at the Mural Café on Mondays and Tuesdays from 9:30am-2:00pm or online anytime at www.prhcatchtheace.ca. Draw closes at midnight on Tuesdays and the winner is announced live on our Facebook page at 10:00am on Wednesdays.



Tickets are on sale now for the 2021 *Un-Gala @ Home* event on Saturday, October 16th! This is one meal you DO NOT want to miss! Get Your tickets now here: www.prhfoundation.com/ungala